

## SPEC SHEET + MEASUREMENTS

**DISTRICT**

District® Featherweight French Terry™ Long Sleeve Crewneck. DT572

### Product photo



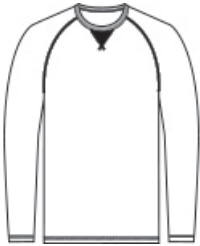
A laid-back vibe captured in the casual ease of French terry.

- 4.5-ounce (153 GSM)
- 70/30 combed ring spun cotton/polyester French terry, 40 singles
- Rib V patch at neck
- Raglan sleeves
- 2x1 rib knit neck
- Tear-away label

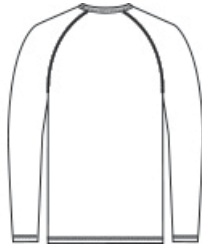
### CARE INSTRUCTIONS

Machine Wash Cold With Like Colors. Do Not Bleach. Tumble Dry Low. Cool Iron If Necessary.

### Sketches



front



back

# SPEC SHEET + MEASUREMENTS



District® Featherweight French Terry™ Long Sleeve Crewneck. DT572

## PRODUCT MEASUREMENTS

	XS	S	M	L	XL	2XL	3XL	4XL
Body Length at Back	27	28	29	30	31	32	32 1/2	33
Chest	17 1/2	19	20 1/2	22	23 1/2	25	27	29
Raglans and Dolmans Sleeve Length	33	33 3/4	34 1/2	35 1/4	36	36 3/4	37 1/2	38 1/4

**Body Length at Back:** Measured from high point shoulder to finished hem at back.

**Chest:** Measured across the chest one inch below armhole when laid flat.

**Raglans and Dolmans Sleeve Length:** Measure from neck edge to finished hem.

## SIZE CHARTS

	XS	S	M	L	XL	2XL	3XL	4XL
Chest	32-34	35-37	38-40	41-43	44-46	47-49	50-53	54-57

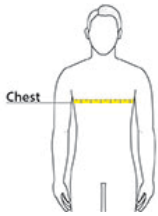
# SPEC SHEET + MEASUREMENTS



District® Featherweight French Terry™ Long Sleeve Crewneck. DT572

## HOW TO MEASURE

---



### CHEST

Measure under the arm and around the fullest part of the chest with arms down, keeping tape horizontal.

## COLORS

---



Black  
PMS BLACK  
C



Flint Blue  
Heather  
PMS 4138C



Gardenia



Light Heather  
Grey  
PMS COOL  
GRAY 8C



Washed Coal



Washed  
Indigo  
PMS 2379C